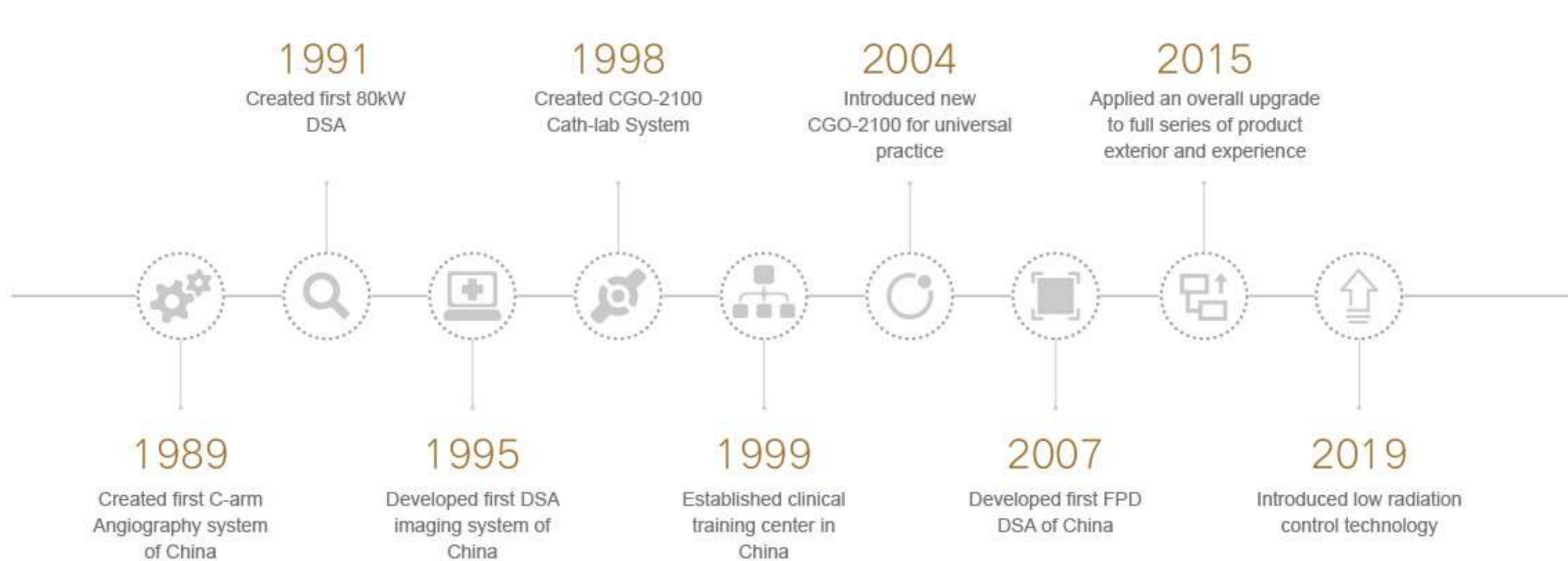




Outstanding imaging chain  
Contribute to precise clinical image

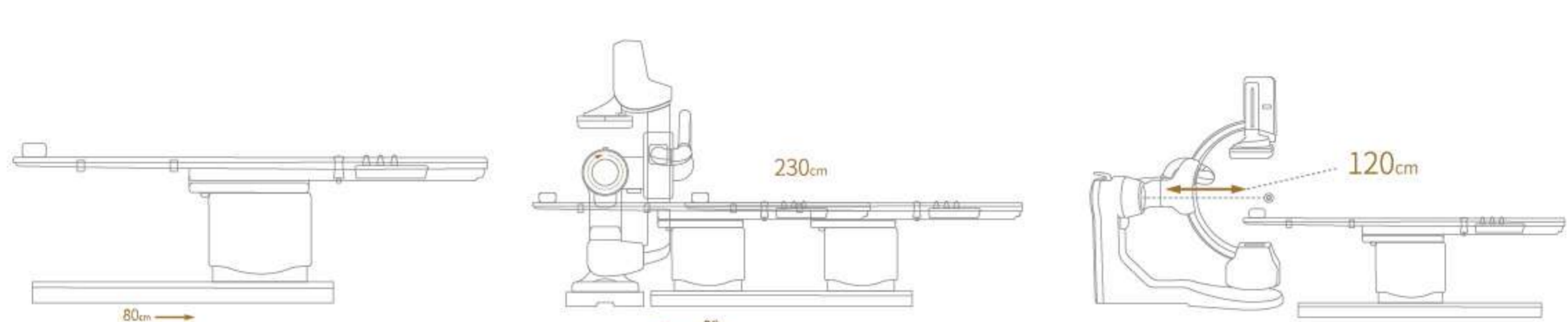
### Milestones of CGO series



### Abundant clinical experience



### Unique design of floor mounted C-arm System



#### Flexible Movement

L-Arm, C-Arm, and cath-table are harmoniously powered together for fast and flexible intraoperative movement of various positions.

#### Intelligent full axis concentric structure

No matter how the rack moves, the center of the image field of view stays the same and the lesion is quickly locked.

#### 120 cm examination depth

Unique floor-mounted L-arm structure design, leaving plenty of space enabling cath-table to move forward up to 120cm to meet the needs of orthopedic femoral artery puncture.

#### 230 cm longitudinal full body coverage

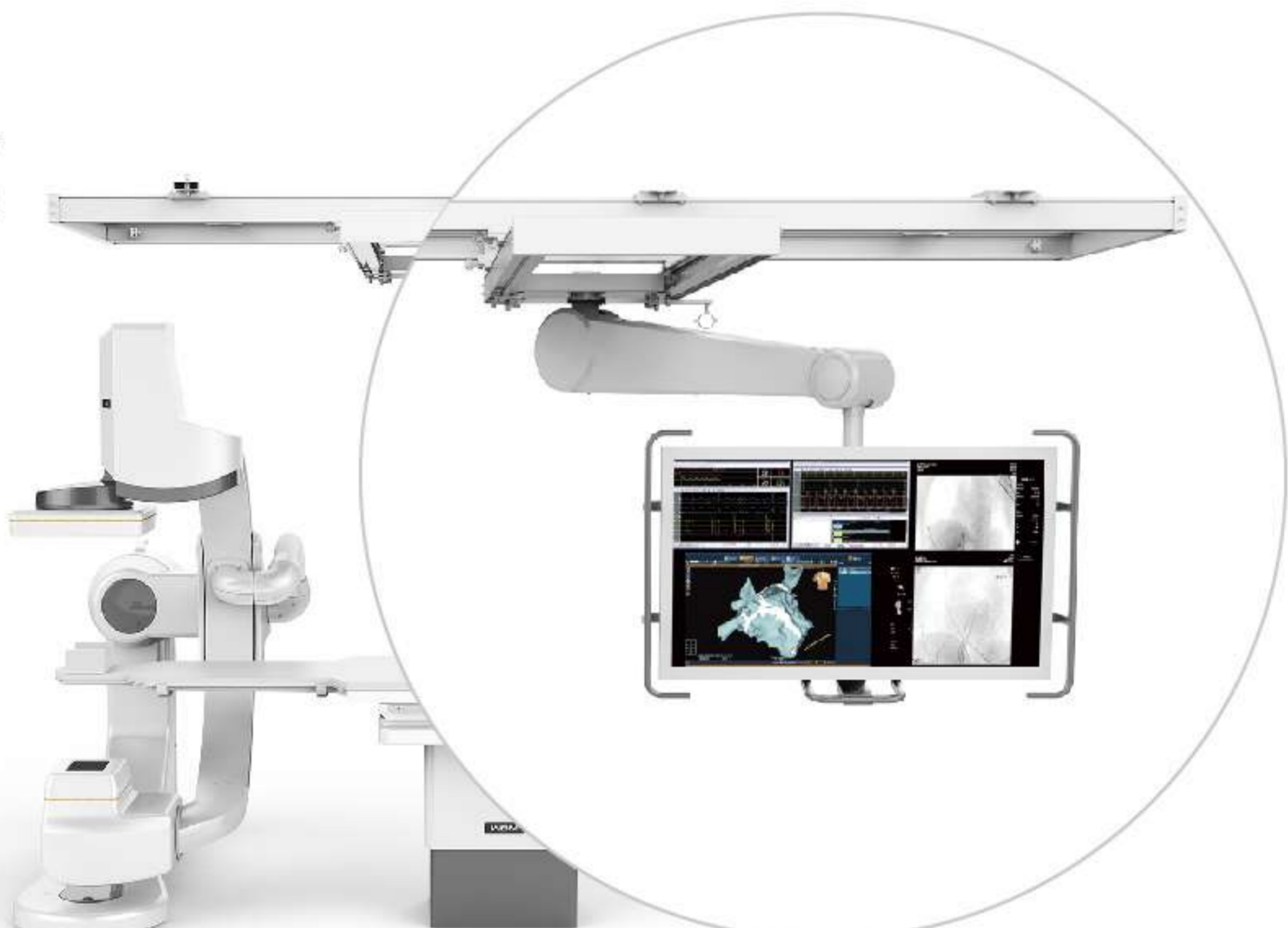
Complete whole-body interventional surgical needs without moving the patient. The cath-table can fast quit examination position along the floor rails, to realize quick shift to CPR position.

### Large Field of View with High Definition

40x30 cm  
Low dose, large FPD  
Large FOV to see more without moving the rack

194µm  
High resolution

16bits  
High contrast



### Safety, thanks to all-round protection



#### AICS low dose coordination platform

Intelligent AI algorithms and several low-dose technologies are used to reduce radiation layer by layer during the whole process.

#### Intelligent anti-collision protection system

Real-time 3D simulation  
Capacitive non-invasive object detection  
Detector self-balanced structure, detector auto retreat once it contacts anything.

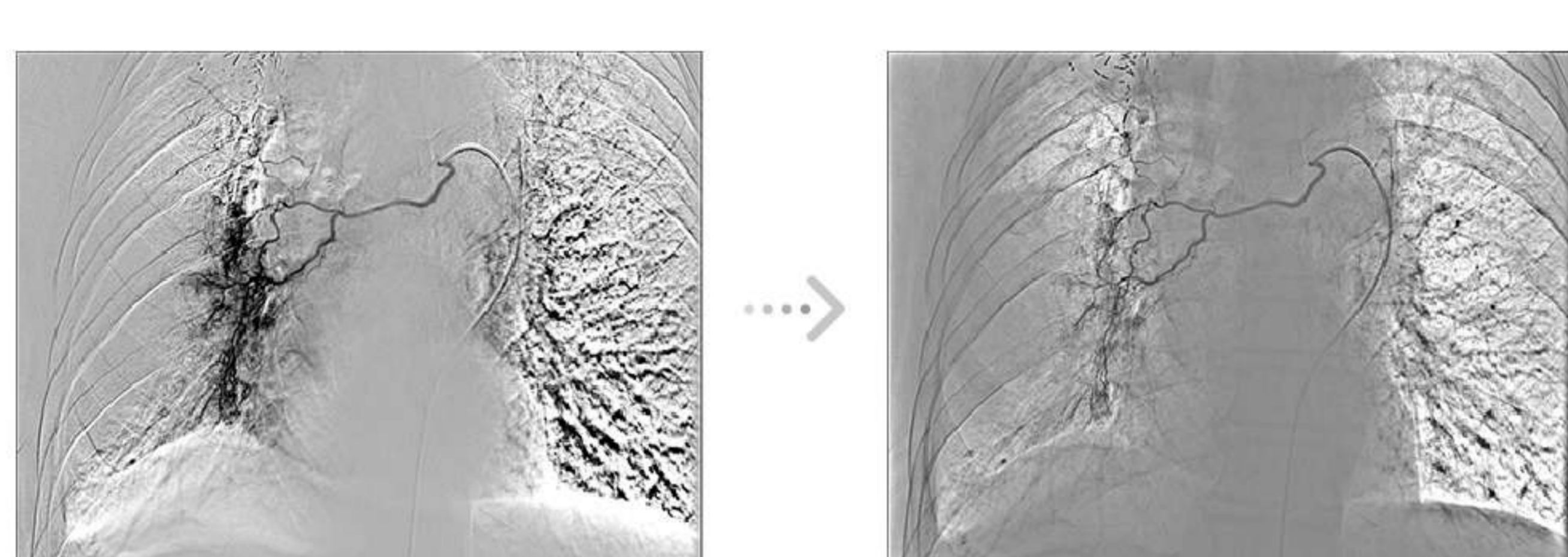
#### Intelligent control handle

Compartment operation, various movements of C arm and cath-bed are controlled by one hand. Convenient and fast, while reducing physician radiation

### Brand-new Invaray 4.0 intelligent imaging platform

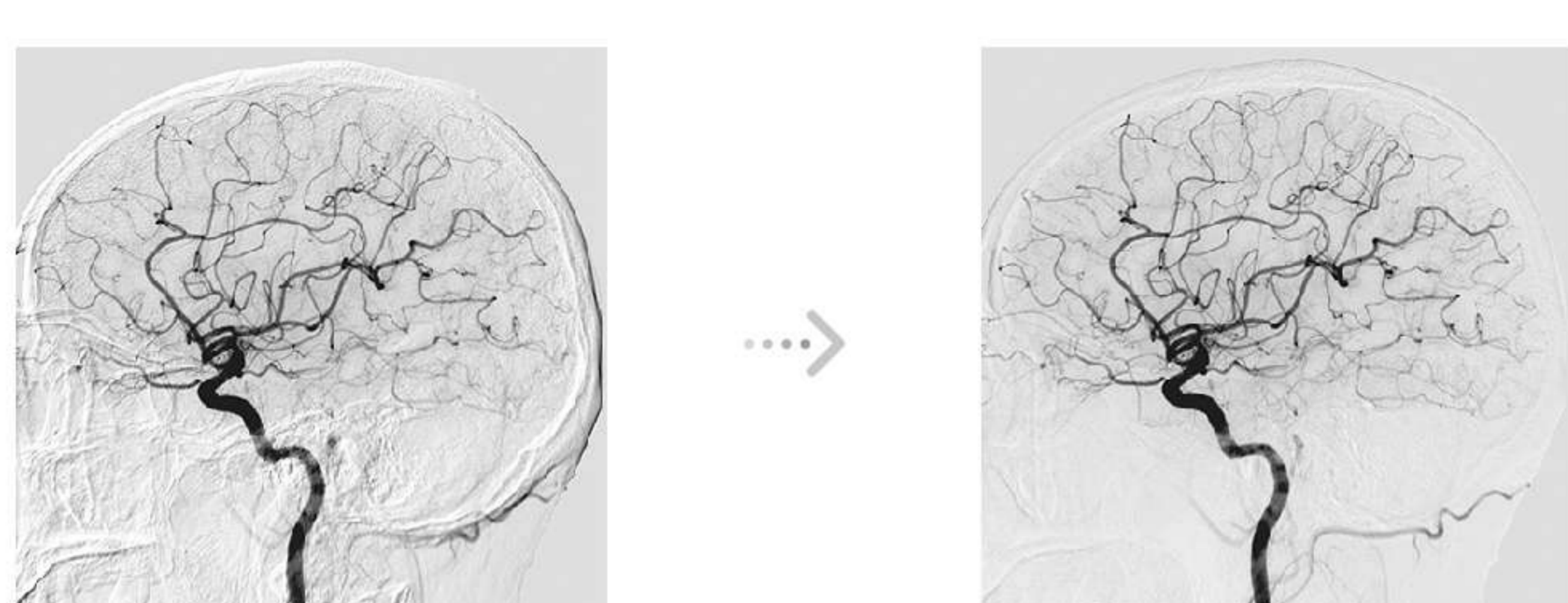
#### Self-subtraction Processing Technique

Equipped with rich and efficient post-processing functions to meet the needs of intervention in heart, nerve and peripheral areas, so as to effectively assist the operation.



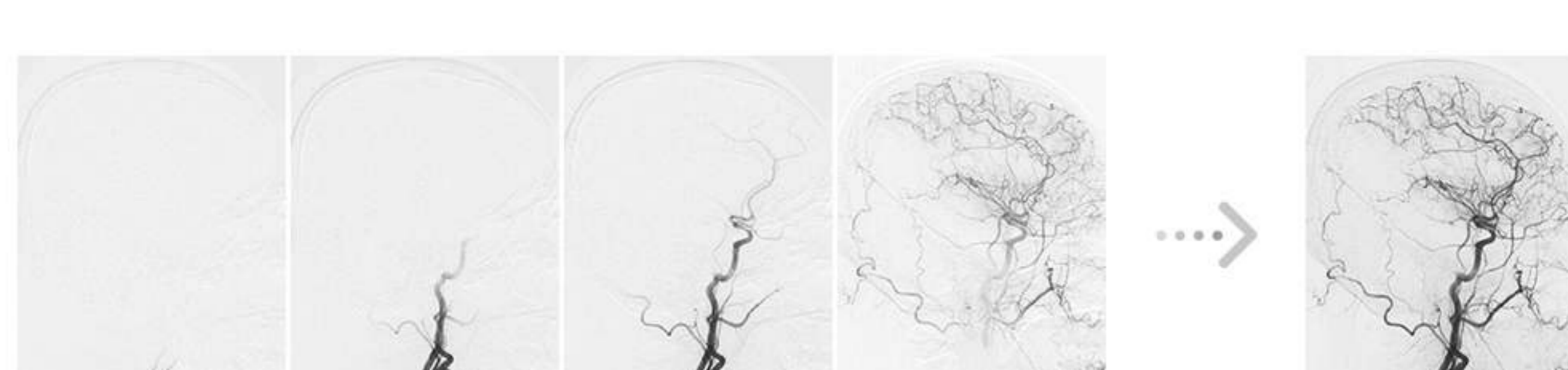
#### Auto Elastic Optimized Registration Technique

AEORT applied to the ROI, to reduce the artifacts of moving background.



#### Vascular Road Track

An overall vessel filling image can be achieved from the combination of vessel filling images of different time phases.



Fast clear safe and efficient