



## Multifunctional DR

-  **Optimized and efficient configuration**  
65kW (optional 50/80kW)
-  **Classical floating tabletop design**  
Meet special positioning needs
-  **Dual detectors configuration**  
Optional Dynamic + Static FPD

## Efficient Configuration

/ Self-developed core components ensure high-quality imaging with reliable and long-lasting operation



Self-developed miniaturized generator



High heat capacity tube



17x17" dual detector

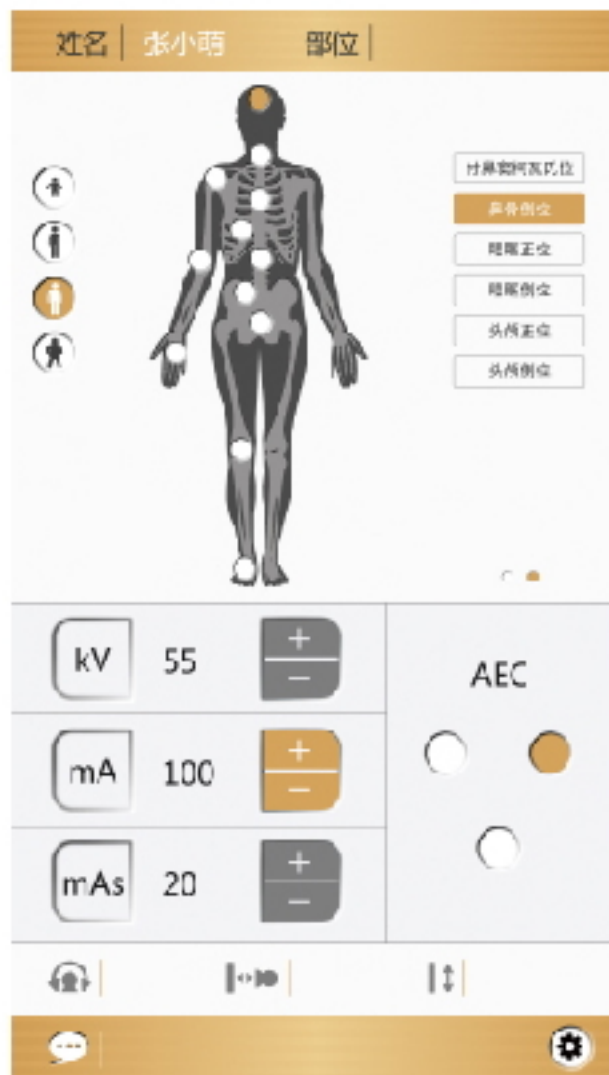


Wandong InvaRay imaging system

## Intelligent Touch System

/ Easy operation, powerful function

- Patient information display
- Patient positioning illustration
- Exposure parameter setting
- Historical image retrieve/review
- Last image preview
- Gravity adaptive
- APR selection



## Smart Structure

/ WiFi flat panel with rotatable tube and column for special position radiography



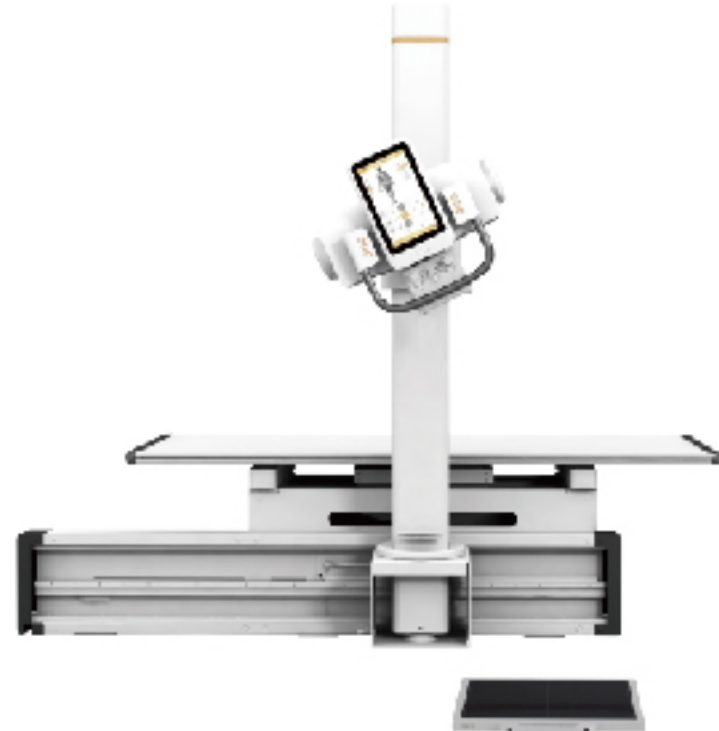
● 17×17" wireless panel



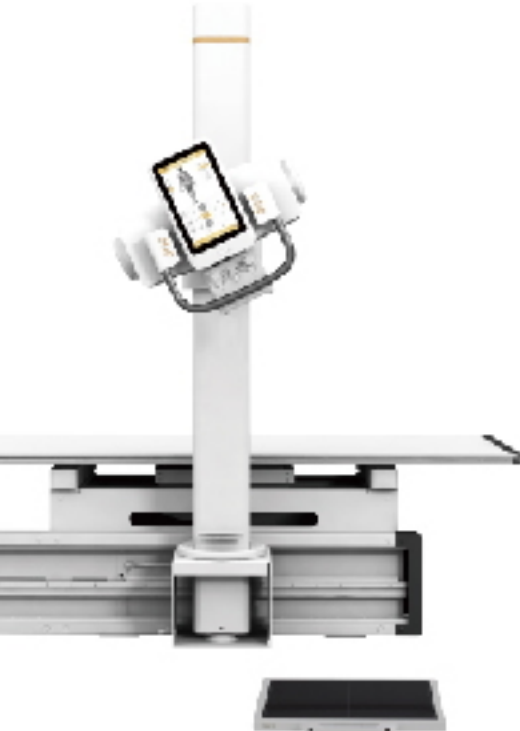
● ±120° tube angulation



● ±180° column rotation



● Wheelchair radiography



● Stretcher radiography

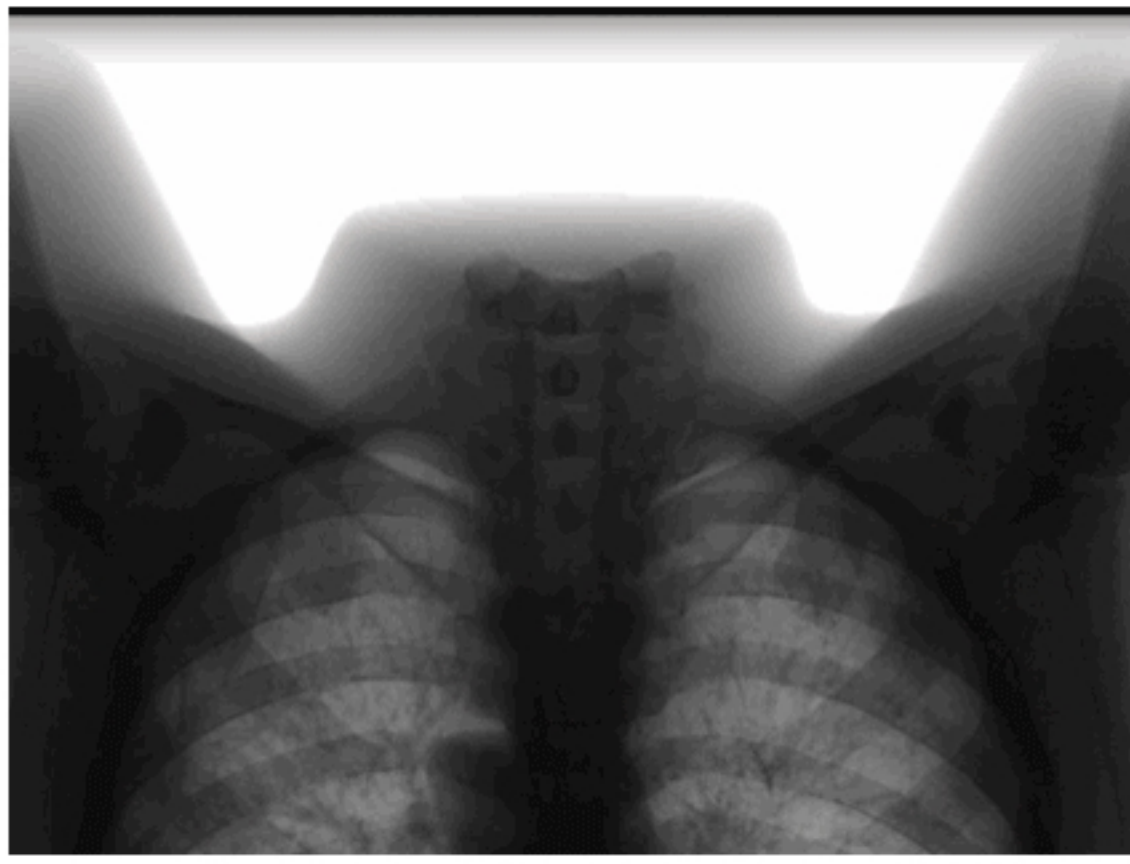
## Dual Panel Configuration, Excellent Imaging

/ Dynamic detector is optional for fluoroscopic application to meet with more special clinical demands

Static, accurate and instant imaging



Dynamic, clear and smooth fluoroscopy



## Intelligent Diagnosis

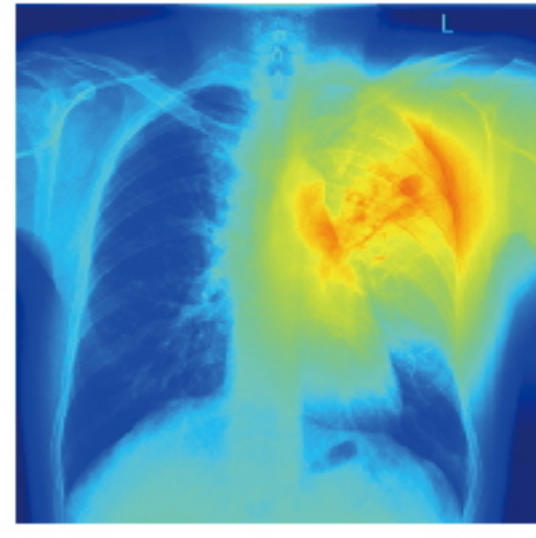
/ Integrate artificial intelligence to quickly identify lesions and assist doctors in accurate diagnosis



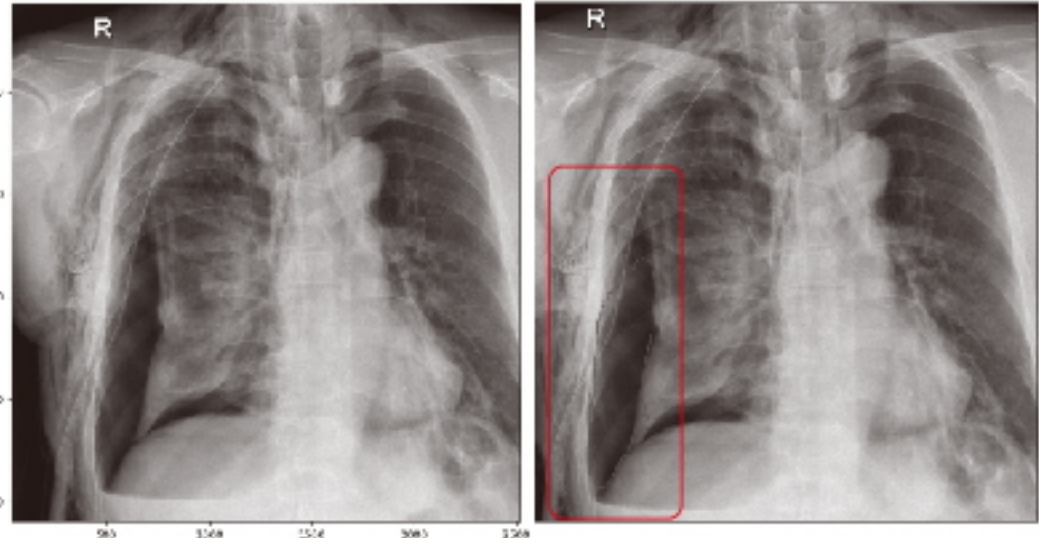
Intelligent bone suppression function



Intelligent knee joint diagnosis



Intelligent diagnosis of tuberculosis



Intelligent pneumothorax diagnosis



Intelligent image search function