

UVENT

From ICU Ventilator To Respiratory Critical Care Station



Solutions that support patients
and assist clinicians



NEW STANDARTS IN RESPIRATORY SUPPORT

UVENT is designed with a focus on patient safety, comfort, and reliability

Patient safety has become a global priority in the last decade. To improve patient safety, ventilators must be able to integrate with all other bedside technologies. **UVENT** featuring a "ventilator-integrated" additional 22-inch display, patient monitor, wireless video laryngoscope and wireless ultrasound.



UVENT is a respiratory care station with modern software and hardware architectures, which allow flexible integration into ICU workflows.

UVENT care station has two high-contrast color displays by advanced UniScreen technology. There is no need to choose data visualization priority — focus your attention on the patient.

UVENT is designed to support patients breathing and assist clinicians to obtain multiparametric information about patient status at the point-of-care.

ProVent — the latest adaptive ventilation mode

UVENT provides intelligent adaptive ventilation modes, high flow oxygen therapy, comprehensive lung mechanics monitoring and full range of diagnostic tools.

ProVent is the latest volume control adaptive ventilation mode, which is designed to improve patient-ventilator synchrony and based on lung protection strategy. ProVent adapts to the dynamic patient needs and allows patient to control the breathing process.



Remote patient monitoring during respiratory support

UniView technology is a remote monitoring solution that gives access to patient data anytime, anywhere.



Now clinician can easily get access to real-time patients' vital data from any location. As a result, it can increase clinician's efficiency for a better health care.

This technology brings clinicians the opportunity to control the patient's status directly from a tablet or smartphone.

UVENT remote patient monitoring solution displays important measuring parameters such as waveforms, alarms and numeric data on any mobile devices.

Intubation Support Tool

Intubation Support Tool (IST) is a special instrument to assist clinicians during intubation procedures.

IST includes preoxygenation via NIV ventilation; apneic high flow oxygenation during intubation process; continuous monitoring of SpO₂ and CO₂ by built-in pulse oximeter and capnograph; live visual control on HD screen of the tube positioning, with integrated wireless video laryngoscope.

IST can improve clinical outcomes, with clear confidence in patient safety, and elimination of possible complications.



Ventilator-integrated portable ultrasound for lung monitoring

Lung ultrasound (LUS) increases the efficiency of monitoring-treatment response.

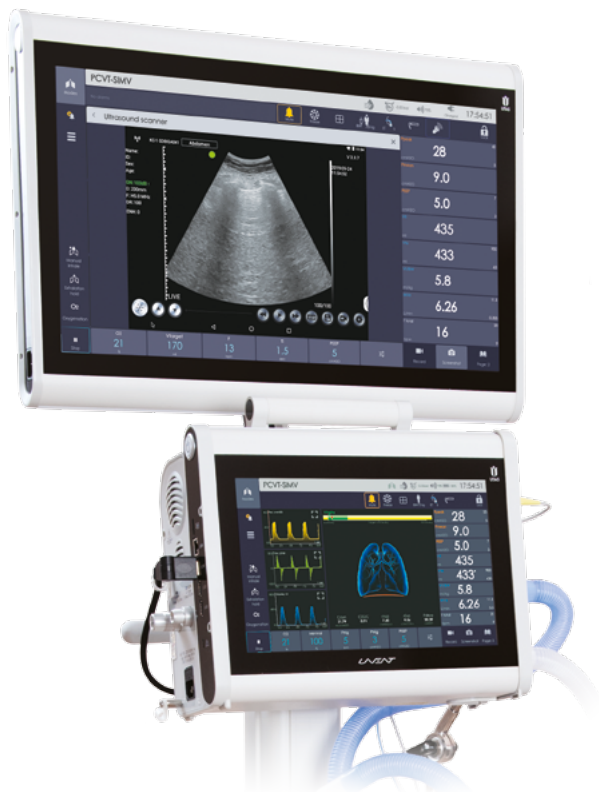
LUS is an integral part of clinical practice in ICU. LUS is important both for the monitoring and diagnostic procedures of acute respiratory failure.

UVENT built-in lung ultrasound technology directly visualizes lungs complications during the ventilation process.

UVENT provides solution within wireless ultrasound technology and clear visualization on the 22-inch HD display.

With BLUE-protocol and FALLS-protocol diagnose the majority of the complications in critical conditions quickly and accurately.

LUS is the point-of-care tool that clinician can use at the bedside for an immediate evaluation of patient status.





Remote UVENT

UTAS innovative technology to provide efficient support and timely service.

We pay special attention to remote in-service support of UVENT ventilators at customer side.

REMOTE UVENT provides unlimited possibilities in carrying out remote diagnostics, repair, adjustment, and software update by our engineers remotely from any location simply through the Internet.

REMOTE UVENT — professional service support at any time, and anywhere.



Let's Find The Solutions Together

Address your question to UTAS and communicate directly with the necessary specialists.

We maintain consultations in the language of professionals, considering real clinical experience. At your service are technical experts, consulting clinician, developers, sales & marketing team.

Good service is our priority. To find solutions for even the most difficult situations, we collaborate with leading clinical centers in 25 countries.